



**Sierrafish.com**

[HOME](#)

[ABOUT](#)

[LAKES](#)


[STREAMS](#)

[CONTACT](#)



Cascade Lake - Hoover Wilderness

Fishing:

 3/10

Hiking:

 2/10


Scenery:

 7/10

Solitude:

 4/10

Distance:

 1.6 mi 1-way

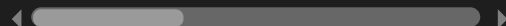
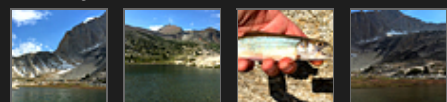
Map:



Elevation Profile:



Gallery:



## Cascade Lake - (Mono County)

### Hoover Wilderness

June 27, 2015

 Like 0



### Getting There

To reach [Cascade Lake](#), get to [Highway 120 at the east end of the park](#), either from Yosemite or from [Lee Vining, California](#). Take Saddlebag Road, which is signed, and follow it uphill over a road that is partly paved and partly improved dirt road. Once you arrive at Saddlebag Lake, you have the luxury of a [store](#), bait shop, restaurant, and keeper of the t-shirt that becomes yours if you get the Sierra slam in the 20 Lakes Loop.

### The Hike

If only staying for a day hike or overnight for backpacking trips, park in the trailhead parking lot which affords a great deal of parking spaces. If you plan on going to **Cascade Lake**, park in the trailhead parking area. Basically, the hike is minimal if you take the water taxi. If the taxi is not running, add 1.2 miles to your hiking. **Cascade Lake** is a mile and a half from the water taxi drop off so it can be a popular spot. Some good campsites can be found on the south, north and east side of the lake near Towser Lake.

### The Fishing

I started fishing the outlet creek of **Cascade Lake** first with a yellow grasshopper which garnered very little attention so I went back to the flybox looking for something else. After switching to a yellow Caddis Stimulator I managed to land

a few tiny Brookies at the outlet.

We fished **Cascade Lake** for about an hour before a rain storm drove us off of the mountain. My son caught a 10 inch Brook Trout on an inflated night crawler and I landed a small Brook Trout on an Elk Hair Caddis. Albeit, the fishing was slow and the fish we saw were small at **Cascade Lake**. I would not be surprised if a larger fish came out of **Cascade Lake** as there are great lake features such as spawning grounds, deep waters, nice shelves and an appreciable bio-mass present. I will have to ask the folks at the Saddlebag Lake store next time I visit.

### SierraFish.com

[Home](#)  
[About](#)  
[Lakes](#)  
[Streams](#)  
[Contact](#)

### About

This site was created to provide information on fishing the lakes and streams in California's Sierra Nevada Mountains.

### Latest Trips

[Half Moon Lake](#)  
[Lower Velma Lake](#)  
[WF Carson River](#)  
[Crater Lake](#)  
[EF Carson River](#)

### Contact Us

Email: [info@sierrafish.com](mailto:info@sierrafish.com)  
Visit our contact page

Copyright © 2015. Sierrafish.com. All Rights Reserved.