



**Sierrafish.com**

[HOME](#)

[ABOUT](#)

[LAKES](#)

[STREAMS](#)

[CONTACT](#)



Lower Kinney Lake - October 2013

Fishing:

5/10

Hiking:

2/10

Scenery:

5/10

Solitude:

5/10

Distance:

1.72 mi 1-way

Map:



Elevation Profile:



Gallery:



# Lower Kinney Lake - (Alpine County)

Mokelumne Wilderness

Like 0



## Getting There

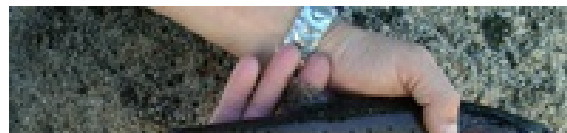
The trailhead starts at **Kinney Reservoir** in Alpine County. **Kinney Reservoir** can be reached via [Highway 4 at Ebbett's Pass](#). Ebbett's Pass is a 30 minute drive from [Markleeville](#) or a 30 minute drive from [Lake Alpine](#). There is parking at **Kinney Reservoir** right off of the highway. **Kinney Reservoir** is a roadside water and is visible from the highway. I usually park on the west side of Highway 4, near the gate at **Kinney Reservoir** to hike into **Lower Kinney Lake**.

## The Hike

The hike to **Lower Kinney Lake** is a relatively easy hike. At 1.72 miles, the distance is perfect for the first time hiker. Coincidentally, this was the first backpacking trek I took 20 years ago into the Sierras. It has some ups and downs, but it is usually shaded walking with modest climbs. Wrap your head [around this](#).

## The Fishing

The Cutthroat were biting at **Lower Kinney Lake**! While fishing **Lower Kinney Lake**, I found action casting from the west shore starting from the dam to around the peninsula. Historically, I have had luck at **Lower Kinney Lake** casting from the peninsula when the water level is high. That is the deepest section of the lake and the trout cruise here about 50 feet from shore and beyond. It can seem at times, that the fish are just beyond your cast. I have used a casting bubble and a cricket and caught this fish before at **Lower Kinney Lake**.



Kinney Reservoir is stocked periodically with Lahontan Cutthroats and Cutbows.



You can catch fish using any traditional Sierra spinner (Panther Martin, Mepps, Rooster Tail). Fly-fishing **Lower Kinney Lake** with grasshoppers, leeches, and midges will usually produce. A float tube or raft will be helpful (I've used both) at

**Lower Kinney Lake**. There is a noticeable midge hatch in the evening which the Cutts take advantage of. In the day at **Lower Kinney Lake**, the fishing can be tough. Baits like powerbait have never worked for me here, but others I have run into on the trail to **Lower Kinney Lake** have used it and had luck.

### SierraFish.com

[Home](#)  
[About](#)  
[Lakes](#)  
[Streams](#)  
[Contact](#)

### About

This site was created to provide information on fishing the lakes and streams in California's Sierra Nevada Mountains.

### Latest Trips

[Half Moon Lake](#)  
[Lower Velma Lake](#)  
[WF Carson River](#)  
[Crater Lake](#)  
[EF Carson River](#)

### Contact Us

Email: [info@sierrafish.com](mailto:info@sierrafish.com)  
Visit our [contact page](#)

Copyright © 2013. Sierrafish.com. All Rights Reserved.